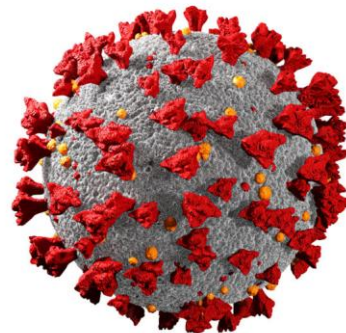


# Darlington COVID-19

## Response, Prevention and Control



# Response 1

A report to Cabinet (14<sup>th</sup> July 2020) detailed the response of the Council to the COVID-19 pandemic March – June 2020.

The key elements of response include:

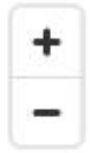
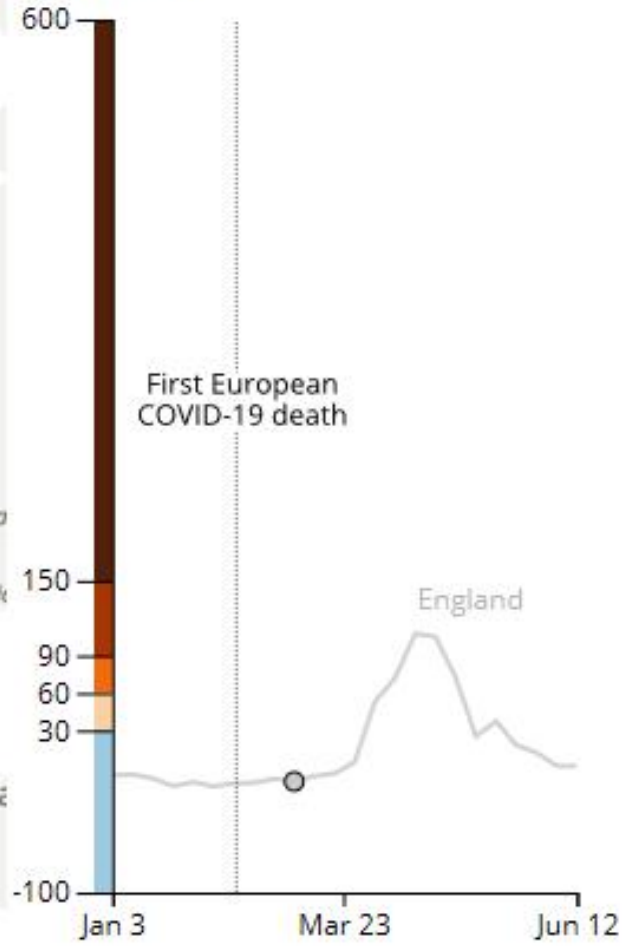
- Strategic management – Local Resilience Forum
- Strategic Steering Group
- Briefing Cabinet and Group Leaders
- Staff briefings

Search for an area

Mar 6



% difference from expected mortality (all deaths)

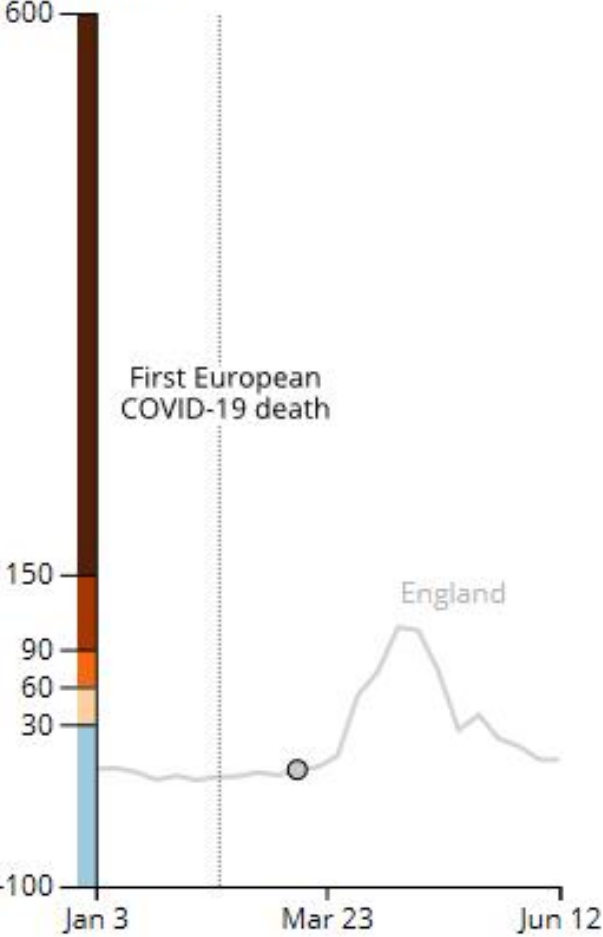


Search for an area ▼

# Mar 13



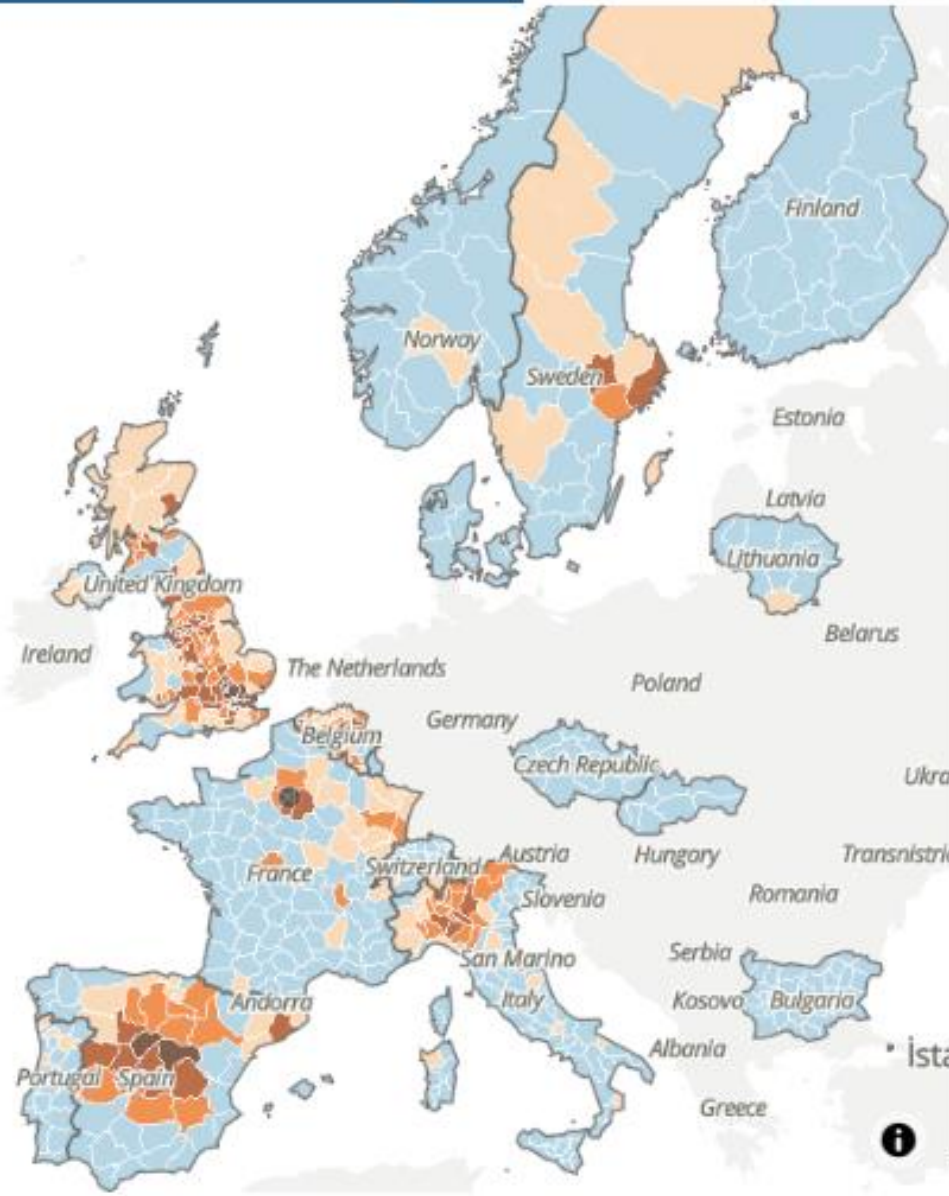
% difference from expected mortality (all deaths)



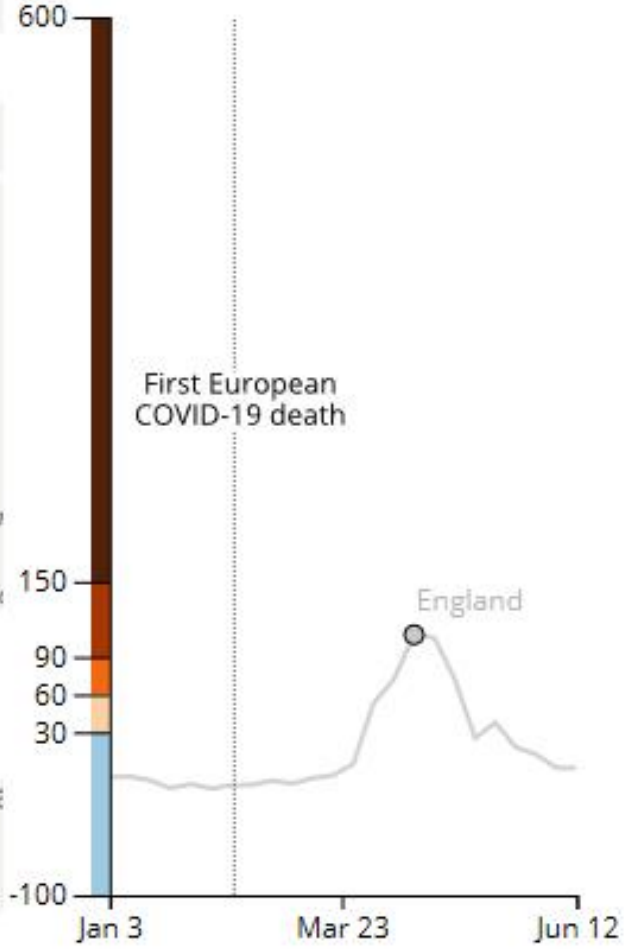
Search for an area



Apr 17



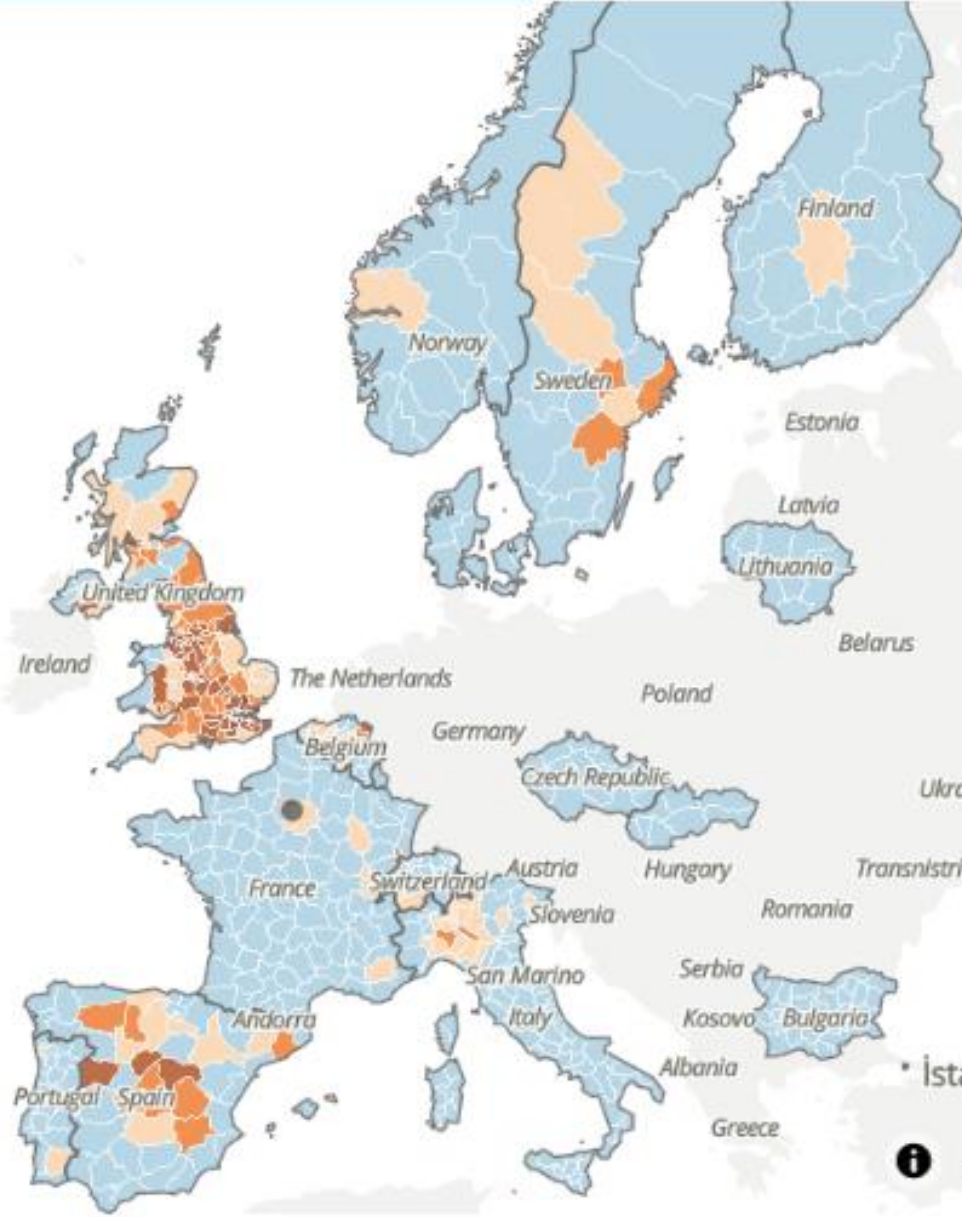
% difference from expected mortality (all deaths)



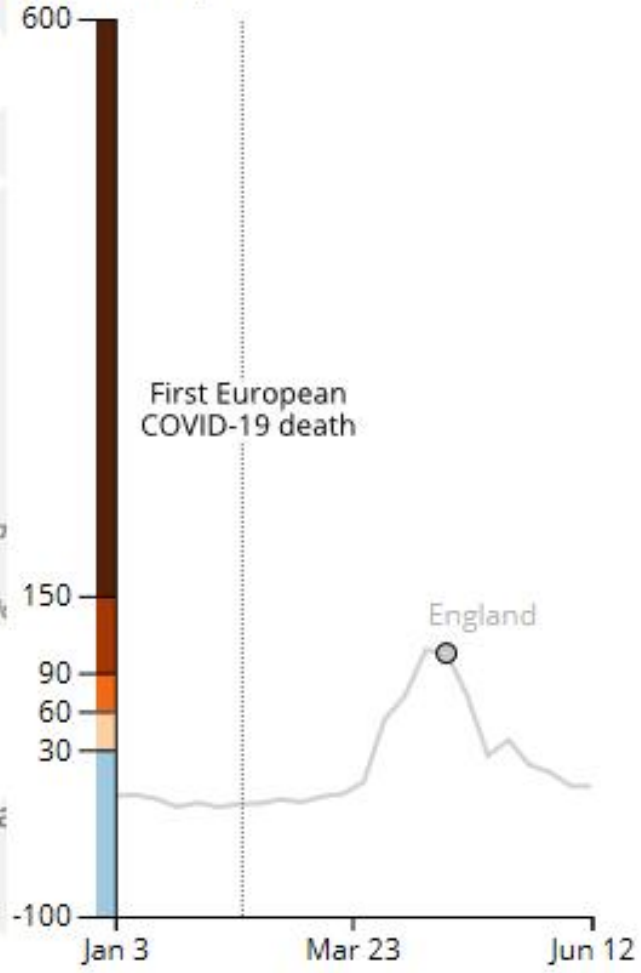


Search for an area 

# Apr 24



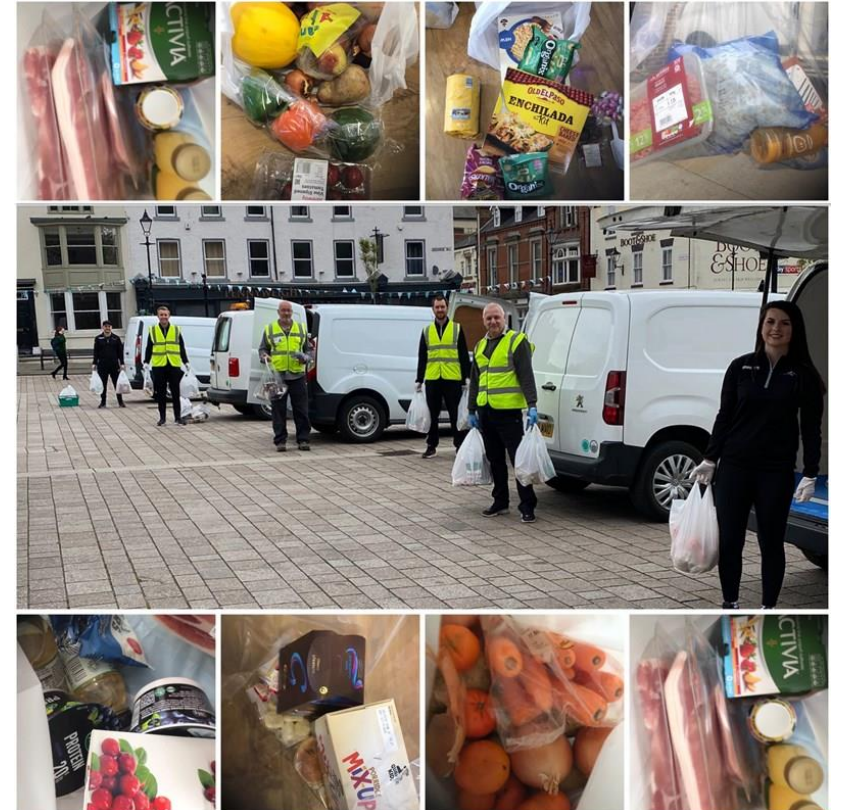
% difference from expected mortality (all deaths)



# Response 2

- Community Support Hub (Separate report available detailing Hub response) including:

- Volume of Hub calls
- Food Parcel distribution
- Volunteer response



# Response 3

- Work with care sector (separate report available)
- Support for “Shielded” people
- PPE
- Business support
- Hardship relief and the Voluntary Sector
- Housing and Homeless services



# Response 4

- Neighbourhood services
- Lifeline services
- Education (separate report available)
- Public Health (separate report available)
- Recovery Planning

# Local Outbreak Plan

- National requirement for every LA to publish plan
- Prevent local outbreaks, contain locally, minimize spread of virus, avoid escalation to local restrictions
- Plan sets out prevention measures
- Process for early identification
- Steps to manage local outbreaks
- Local Coordination

# Local Outbreak Plan Centres on Seven Themes

# **Theme 1: Schools and Care Homes**

- Education settings
- Guidance – FAQs
- Enhanced offer for care homes

# **Theme 2: High-Risk Settings**

- Areas with a mixture of:
  - Close proximity of people on one site
  - Confined spaces
  - Poor infection control
  - Underlying vulnerabilities of people



# Theme 3: Testing

## Pillar 1: NHS Foundation Trusts

- NHS staff GP's and Nurse Practitioners
- Social care staff
- Symptomatic care home residents
- Asymptomatic care home residents who are transferring from community or other care home
- Patients being admitted overnight to hospital for overnight stay are tested

## Pillar 2: National Testing Programme

- Anyone who has symptoms of coronavirus, whatever their age
- Essential workers who are self-isolating either because they or member(s) of their household have coronavirus symptoms
- Whole care home asymptomatic testing

Testing can be accessed via the national testing portals

[https://www.gov.uk/guidance/coronavirus-covid-19-getting-tested.](https://www.gov.uk/guidance/coronavirus-covid-19-getting-tested)



# Theme 4: Contact tracing in complex settings



Tier 3 – call handlers



Tier 2 – NHS professionals



Tier 1 – local Public Health  
England Health Protection Team

- Complex cases identified at ‘Tier 2’ are escalated to the ‘Tier 1’ North East PHE HPT based in Newcastle
- The Director of Public Health will support the HPT in the contact tracing in complex setting and high-risk sites

# Theme 5: Data Integration

Local authorities receive a range of data, including:

- Daily and cumulative positive results tested through pillar 1 and 2
- Daily and cumulative positive cases in NHS Test and Trace
- Postcode data for all lab-confirmed positive cases
- Exceedance reports for each LA for pillar 1 and 2 testing
- Daily national sit rep
- ONS Covid-19 deaths include place of death
- Daily reports from PHE NE HPT on new outbreaks in care homes
- Weekly reports from care homes



# COVID-19 surveillance dashboard

All data accurate as of 25.08.20

## Darlington cases summary



619

Total confirmed cases (Pillar 1 and 2)



2

7 day cases

Change in cases from previous week

Number of cases 2

7 day rate\* + 0.9



580.9

Rank

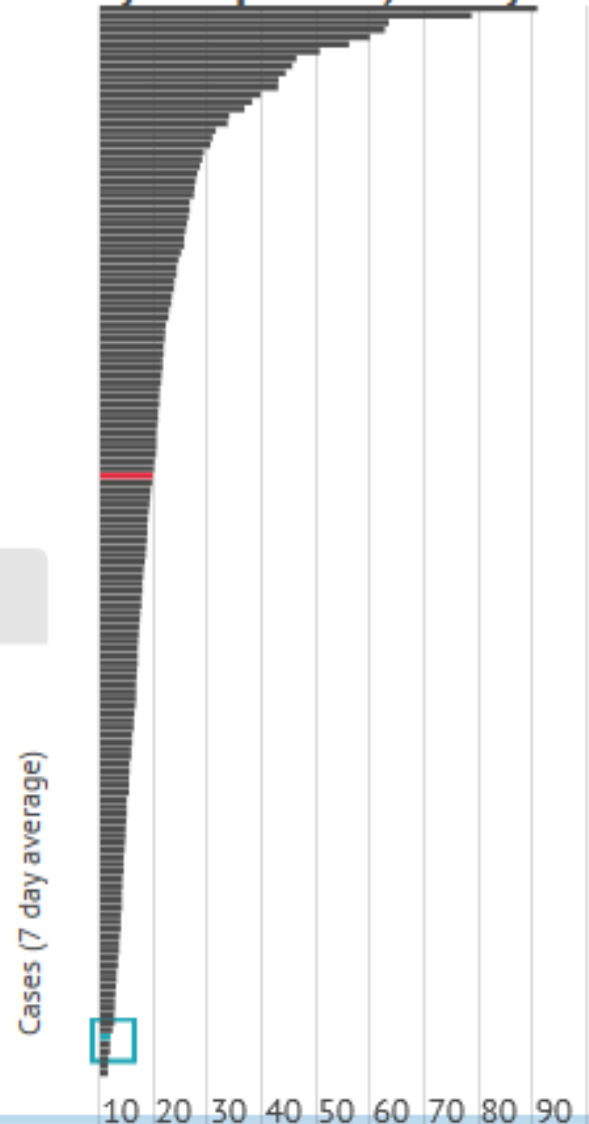
Rate of confirmed cases per 100,000 population



2.8

7 day rate of confirmed cases per 100,000 population\*

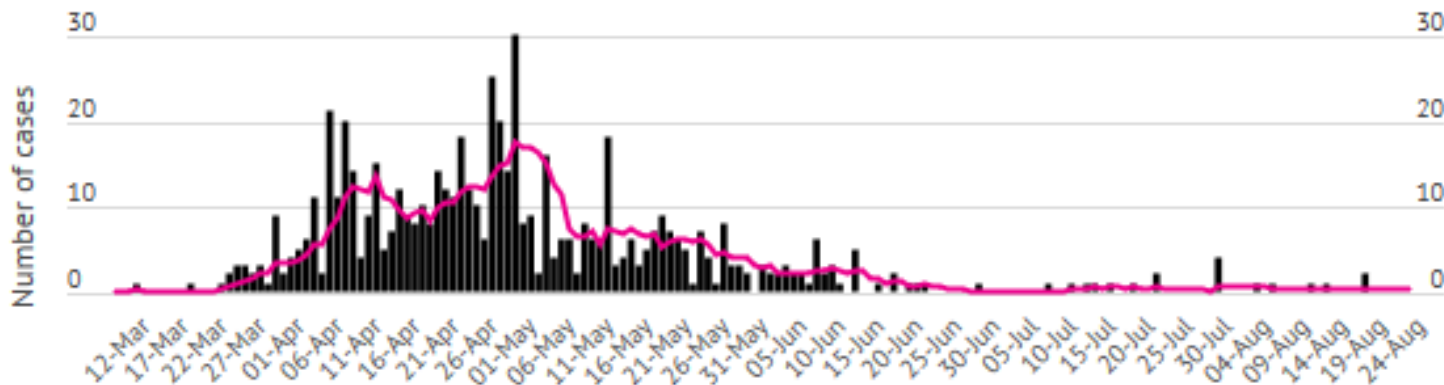
7 day rate per 100,000 by UTLA



Daily Cases

7 day rate per 100,000\*

Weekly change in 7 day rate



# **Theme 6: Supporting Vulnerable People To** **Self-isolate**

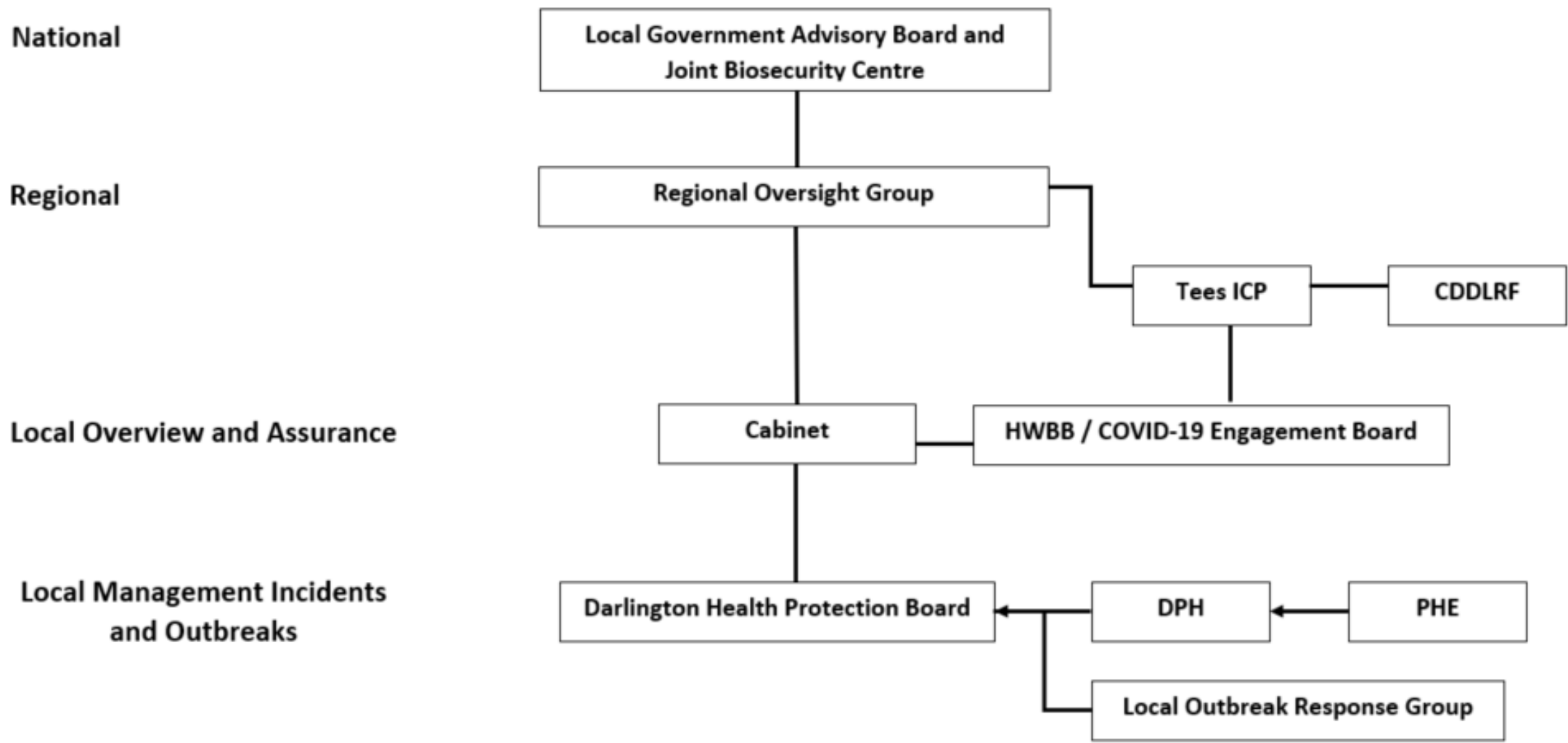
During the response phase, DBC established a Shielding Hub to coordinate effort across the council and a range of local partners. This hub distributed the national support packages and provided a range of support services to the most vulnerable residents.

The hub will continue to support people identified through NHS Test and Trace who need to self isolate and have little or no support.

The NHS Volunteer Scheme accessed through GP surgeries is an important source of support for many people.



# Theme 7: Governance

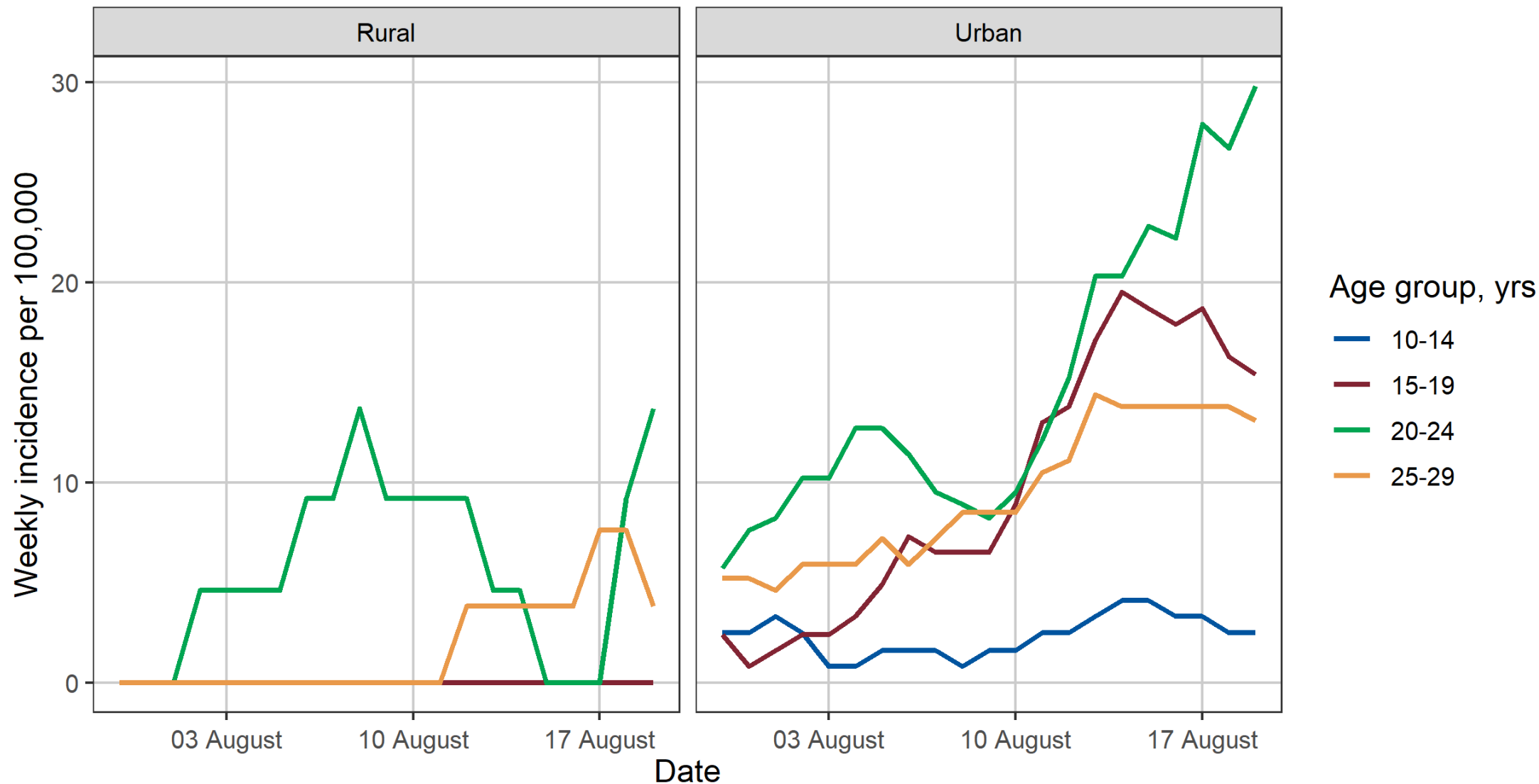


# Communication and Engagement

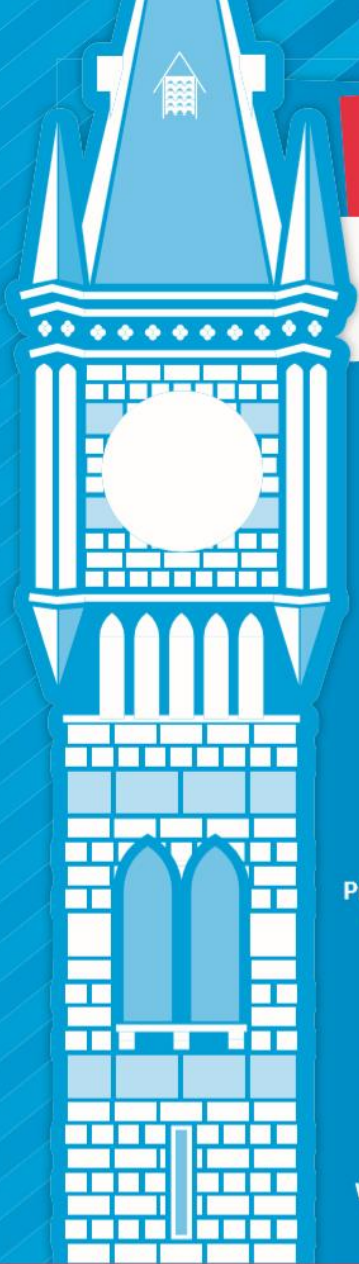
- Preventing local outbreaks of Covid 19 and engaging people across all segments of society with the need to comply with social distancing, be alert to symptoms, access testing where needed and to self-isolate if positive or if contact traced.
- Providing assurance to stakeholders and the public that plans for management and control of outbreaks are effective
- Providing the public with information in the event of outbreak scenarios



# Weekly incidence in young people resident in urban and rural areas North East



Rural Urban Classification (2011) of Lower Layer Super Output Areas, ONS  
Figure produced by Public Health England



# Play Your Part

## Staying Covid-19 Safe In Darlington



Practice social distancing  
whilst out and about



Wear a face covering  
if you are able to



Wash or sanitise your  
hands regularly



Only travel on public  
transport if necessary